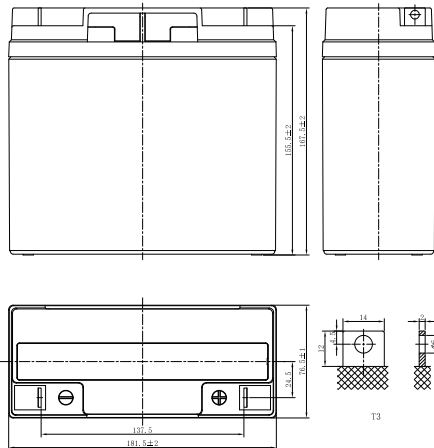


LP SERIES-GENERAL PURPOSE

LP12-18 (12V18Ah)



CHARACTERISTICS

Item	Specifications	
Rated Voltage	12V	
Nominal Capacity (25°C)	C ₂₀ , 1.75V/cell	18Ah
Dimension	Length	181.5mm (7.15inches)
	Width	76.5mm (3.01inches)
	Container Height	167.5mm (6.59inches)
	Total Height	167.5mm (6.59inches)
Approx Weight	5.0kg (11.0lbs)	
Terminal	T3	
Container Material	ABS (UL94 HB or V-0 optional)	
Short-circuit current	504A	
Internal Resistance (25°C)	Approx 18 mΩ (Fully charged)	
Operating Temp. Range	Discharge	-15~50°C (5~122°F)
	Charge	-20~40°C (-4~104°F)
	Storage	-15~40°C (5~104°F)
Nominal Operating Temp. Range	25±3°C (77±5°F)	
Max. Charging Current (25°C)	0.3C	
Charge voltage (25°C)	Standby Use	Cycle Use
	2.25-2.30V/cell	2.35-2.45V/cell
Temp. Coefficient	-3mV/cell/°C	
	-5mV/cell/°C	
Effect of temp. to Capacity	40°C (104°F)	103%
	25°C (77°F)	100%
	0°C (32°F)	86%
Self Discharge	≤3% per month at 25°C (77°F). LP series batteries may be stored up to 6 months at 25°C (77°F) and then a freshening charge is required. For higher temperatures the time interval will be shorter.	

DISCHARGE TABLE

Constant Current Discharge (Amperes) at 25°C (77°F)																
F.V/Time	5min	10min	15min	20min	30min	45min	1h	1.5h	2h	3h	4h	5h	6h	8h	10h	20h
1.85V/cell	47.9	33.0	25.9	21.0	15.5	11.3	9.13	6.91	5.61	4.18	3.40	2.94	2.53	2.01	1.66	0.880
1.80V/cell	51.5	35.0	27.2	21.9	16.0	11.6	9.35	7.06	5.72	4.25	3.45	2.99	2.57	2.04	1.68	0.890
1.75V/cell	54.3	36.4	28.1	22.5	16.4	11.8	9.54	7.19	5.82	4.32	3.49	3.02	2.60	2.07	1.70	0.900
1.70V/cell	56.8	37.9	29.0	23.1	16.9	12.1	9.72	7.31	5.90	4.38	3.54	3.07	2.63	2.09	1.72	0.907
1.67V/cell	58.8	39.0	29.7	23.6	17.2	12.3	9.87	7.40	5.97	4.42	3.57	3.09	2.66	2.10	1.73	0.914
1.60V/cell	62.4	40.6	30.7	24.3	17.6	12.6	10.1	7.56	6.09	4.51	3.64	3.14	2.69	2.13	1.75	0.924
Constant Power Discharge (Watts/cell) at 25°C (77°F)																
F.V/Time	5min	10min	15min	20min	30min	45min	1h	1.5h	2h	3h	4h	5h	6h	8h	10h	20h
1.85V/cell	90.0	62.1	48.6	40.5	30.0	21.9	17.8	13.5	11.0	8.22	6.69	5.81	5.01	3.99	3.30	1.76
1.80V/cell	95.9	65.4	50.7	41.9	30.8	22.4	18.1	13.7	11.2	8.34	6.77	5.89	5.08	4.05	3.34	1.78
1.75V/cell	99.9	67.5	52.1	42.8	31.5	22.8	18.4	14.0	11.3	8.45	6.86	5.96	5.13	4.09	3.37	1.80
1.70V/cell	103.6	69.7	53.5	43.8	32.1	23.2	18.7	14.2	11.5	8.56	6.94	6.03	5.19	4.13	3.41	1.82
1.67V/cell	106.3	71.3	54.6	44.6	32.6	23.5	19.0	14.3	11.6	8.63	7.00	6.07	5.23	4.16	3.43	1.83
1.60V/cell	110.6	73.4	56.1	45.7	33.4	23.9	19.3	14.6	11.8	8.77	7.10	6.15	5.29	4.21	3.47	1.85

LP SERIES-GENERAL PURPOSE

LP12-18 (12V18Ah)



APPLICATIONS

- All purpose
- Uninterruptable Power Supply (UPS)
- Electric Power System (EPS)
- Emergency backup power supply
- Alarm and security system
- Communication power supply
- DC power supply
- Auto control system

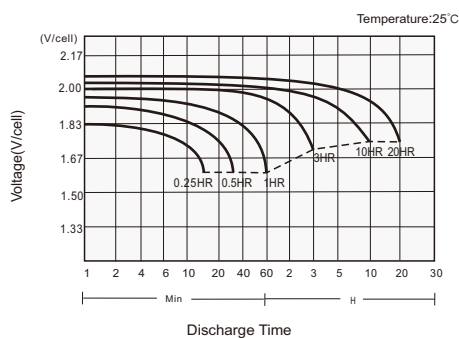
GENERAL FEATURES

- 5 years design life (25°C)
- Lead calcium alloy, sealed design, no watering required
- Puncture resistant micro-porous glass mat separators extend life
- Unique technology optimizes power capacity, cell consistency, and long-term reliability
- Designed for a wide range of applications

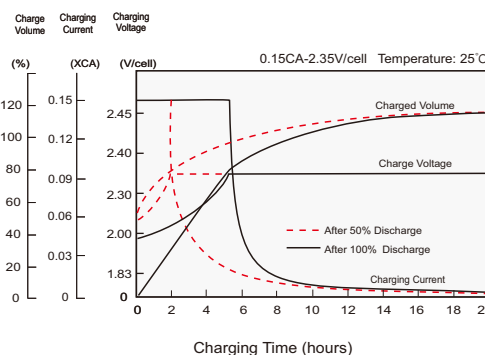
STANDARDS

- Compliance with IEC 60896 standards, EU Battery Directive
- UL, CE Approved
- Manufactured in Leoch@IATF 16949, ISO 45001, ISO 9001 and ISO 14001 certified production facilities

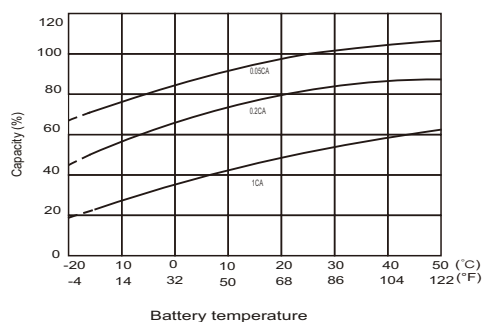
Discharge Characteristics



Charging Characteristics



Effects of Temperature on Capacity



Self Discharge Characteristics

